

Undergraduate Degree

November 2015 - April 2016
 School of Business and Management
 Bachelor of Science in Business Administration Degree (BSBA Degree)

November 2015 - May 2016
 BSBA ACBSP - All Schools
 Inbound & Outbound
 Comparison Results

Description of Instrument

Competitive Set

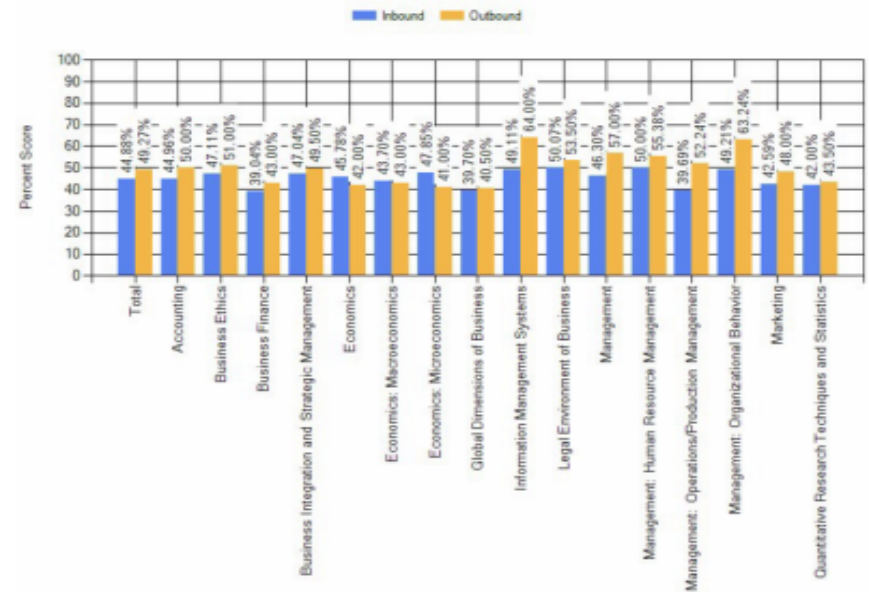
Goal of Actions

Inbound and Outbound Discipline-Specific Assessment

Establish inbound and scoring comparison with BSBA ACBSP: All Schools

Monitoring and managing inbound and outbound results to the competitive set to increase score results by 5%

Comparison of Inbound Exam Results with Outbound Exam Results



Graduate Degrees

November 2015 - April 2016
 School of Business and Management
 Master of Science in Management Degree (MSM) Degree)

January 2015 - February 2016
 MSM ACBSP - All Schools
 Inbound & Outbound
 Comparison Results

Description of Instrument

Competitive Set

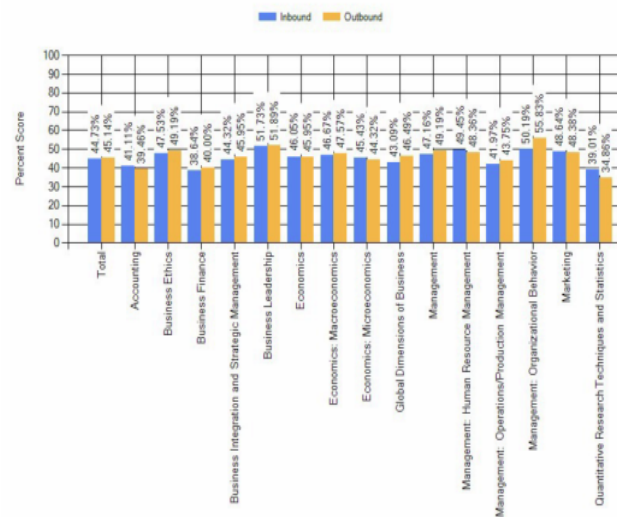
Goal of Actions

Inbound and Outbound Discipline-Specific Assessment

Establish inbound and scoring comparison with MSM ACBSP: All Schools

Monitoring and managing inbound and outbound results to the competitive set to increase score results by 5%

Comparison of Inbound Exam Results with Outbound Exam Results



November 2015 - April 2016
School of Business and Management
Master in of Science in Human Resource Management Degree (MSHRM) Degree)

January 2015 - February 2016
MSHRM ACBSP - All Schools
Inbound & Outbound
Comparison Results

Description of Instrument

Competitive Set

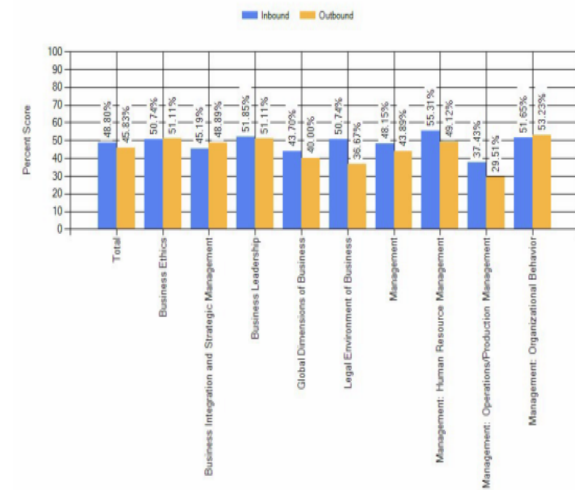
Goal of Actions

Inbound and Outbound Discipline-Specific Assessment

Establish inbound and scoring comparison with MSHRM ACBSP: All School

Monitoring and managing inbound and outbound results to the competitive set to increase score results by 5%

Comparison of Inbound Exam Results with Outbound Exam Results



November 2015 - April 2016
School of Business and Management
Master of Business Administration Degree (MBA) Degree)

January 2015 - February 2016
MBA ACBSP - All Schools
Inbound & Outbound
Comparison Results

Description of Instrument	Competitive Set	Goal of Actions
Inbound and Outbound Discipline-Specific Assessment	Establish inbound and scoring comparison with MBA ACBSP: All Schools	Monitoring and managing inbound and outbound results to the competitive set to increase score results by 5%

Comparison of Inbound Exam Results with Outbound Exam Results

