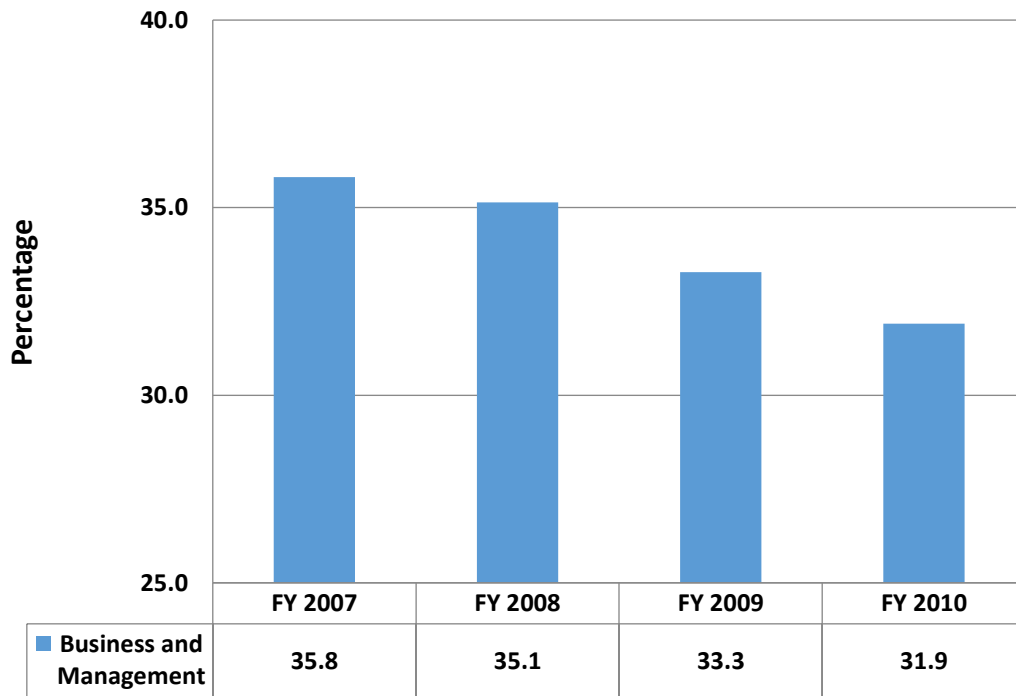
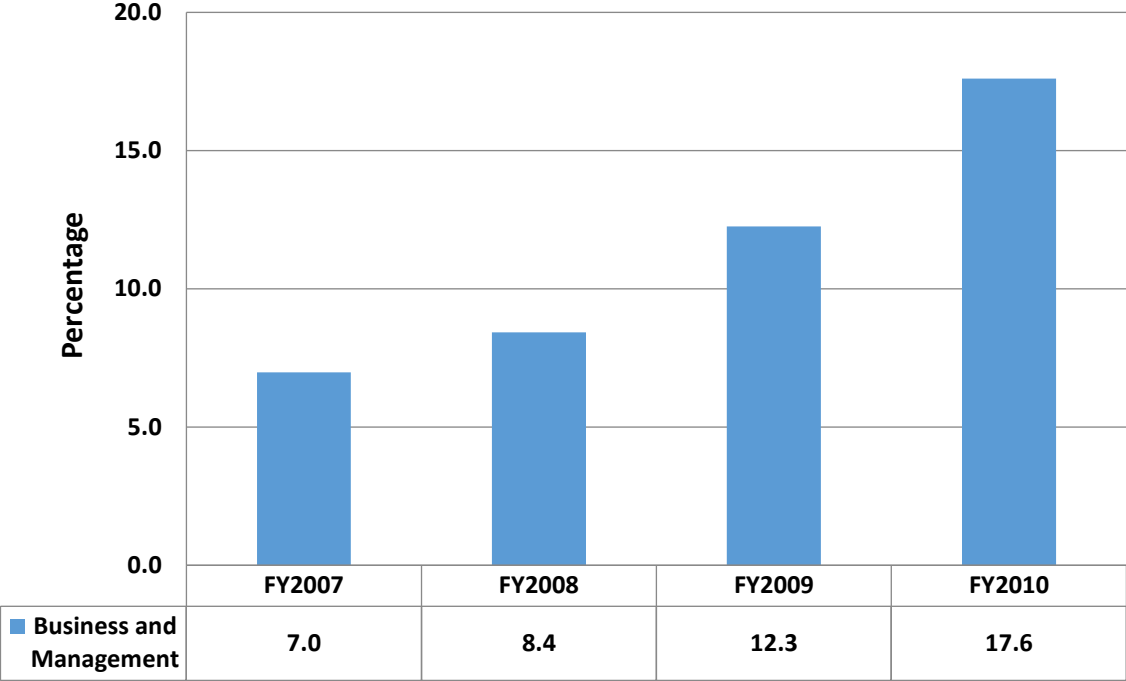


**Graduation Outcomes for School of Business and Management for
FY 07- FY 10 Cohorts as of the End of FY2014**



**Persistence Outcomes for School of Business and Management School for
FY 07-FY 10 cohorts as of the End of FY2014**



Source: Graduation and Persistence Outcomes FY07_FY14 Report
Prepared by: Division of Institutional Planning and Research, 4/6/2017